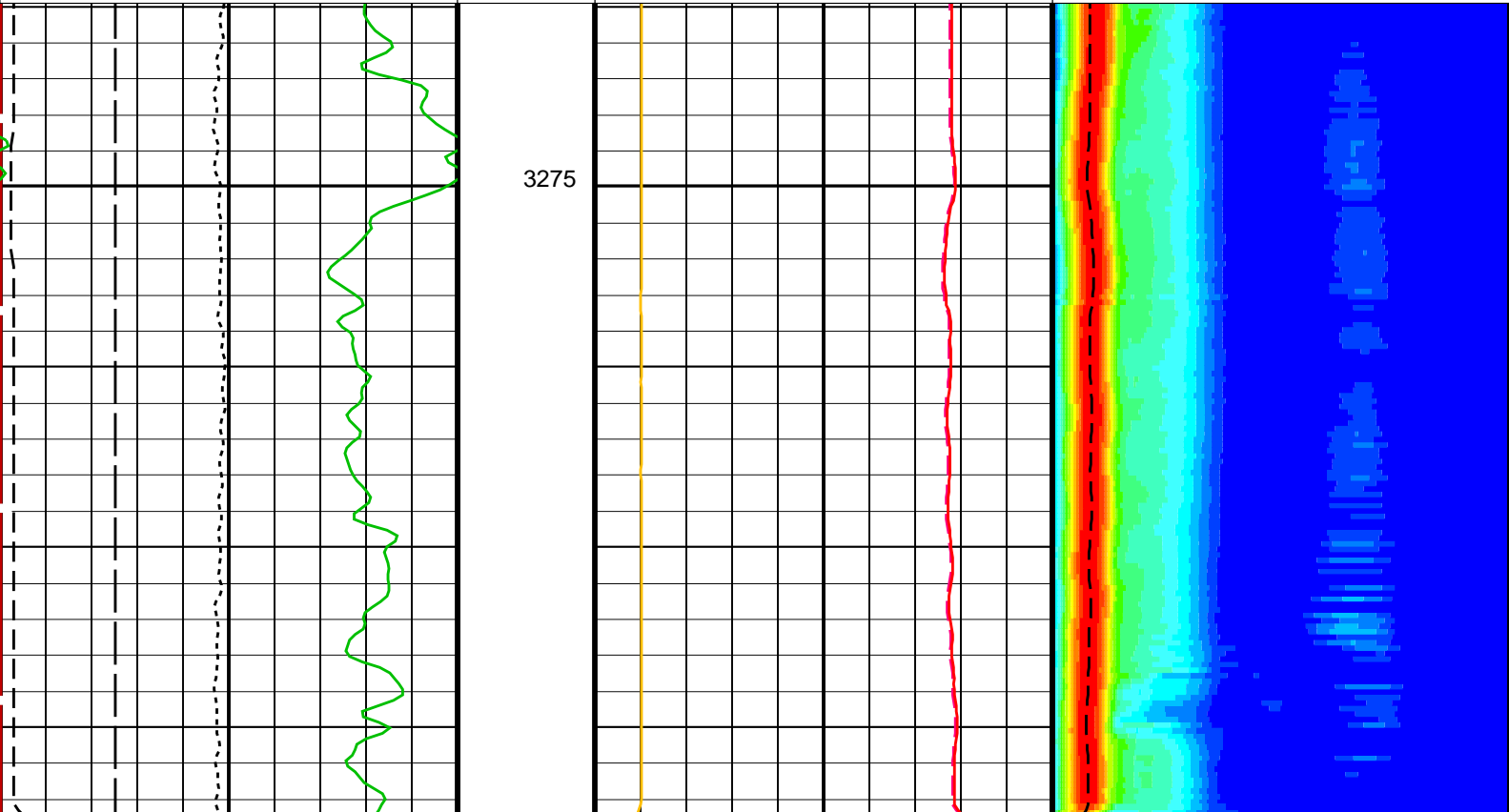


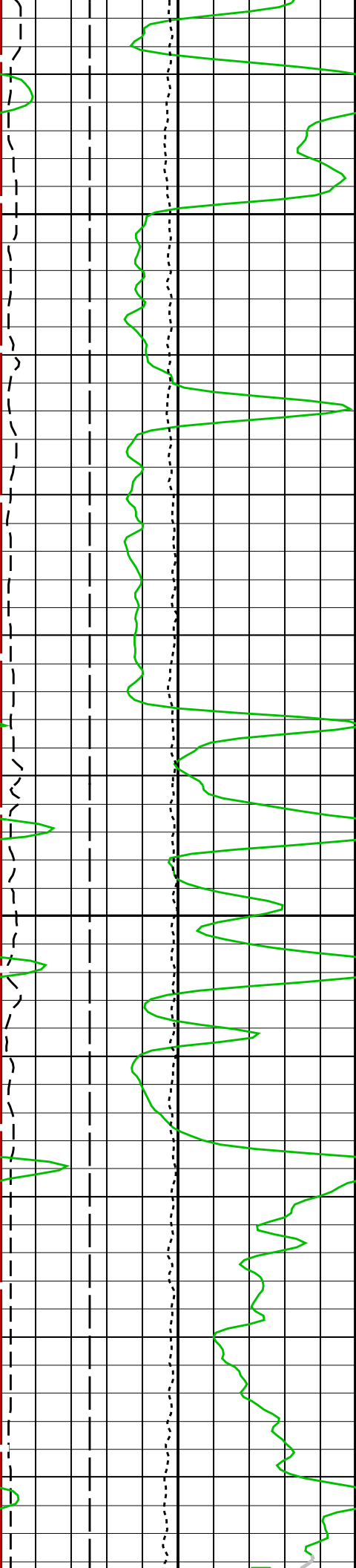
Input DLIS Files						
DEFAULT	FMI_DSI_027PUP	FN:40	PRODUCER	08-Feb-2010 22:35	3374.3 M	3269.9 M
Output DLIS Files						
DEFAULT	FMI_DSI_035PUP	FN:58	PRODUCER	09-Feb-2010 12:40	3374.3 M	3269.9 M

OP System Version: 17C0-154						
FBST-B	17C0-154	DSST-B	17C0-154			
EDTC-B	17C0-154	DTPC-A	17C0-154			

PIP SUMMARY						
Time Mark Every 60 S						

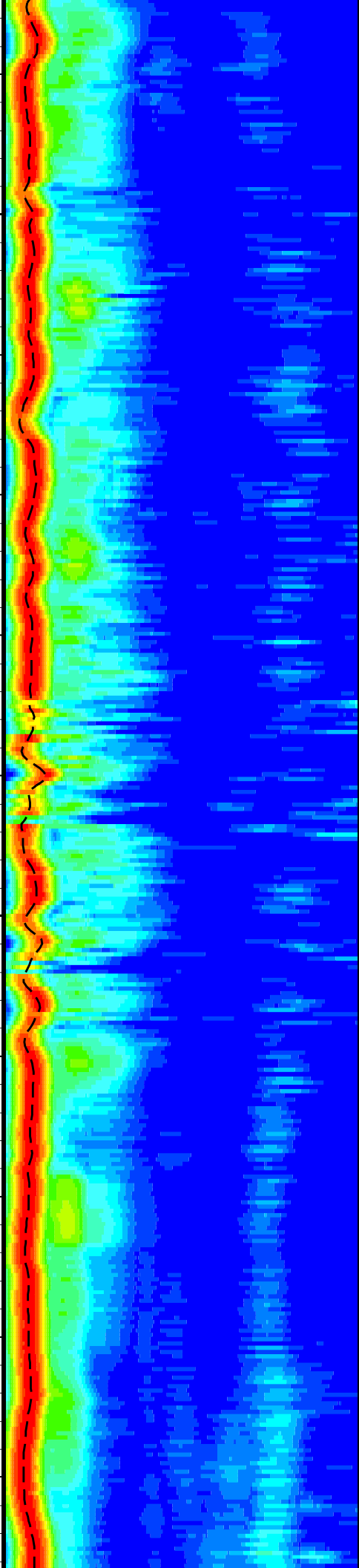
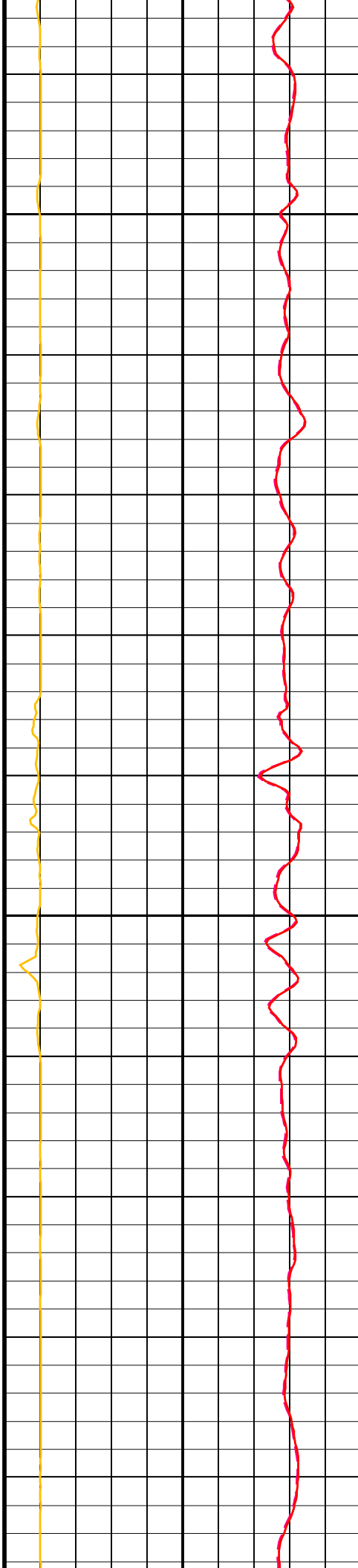
Waveform Data Copy Indicator 1 – Lower Dipole (WC11)			
0 (----) 10			
Tension (TENS)			
10000 (LBF) 0			
Gamma Ray (GR_EDTC)		Tool/Tot. Drag From D3T to STIA	Delta-T Shear – Lower Dipole (DT1)
0 (GAPI) 200			440 (US/F) 40
SAM1 Waveform Gain (WFG1)		Cable Drag From STIA to STIT	Delta-T Shear / RA – Lower Dipole (DT1R)
0 (----) 1000			440 (US/F) 40
Bit Size (BS)		Stuck Stretch (STIT)	Delta-T Shear / RA – Lower Dipole (DT1R)
6 (IN) 16			75 (US/F) 775
		0 (M) 20	75 (US/F) 775

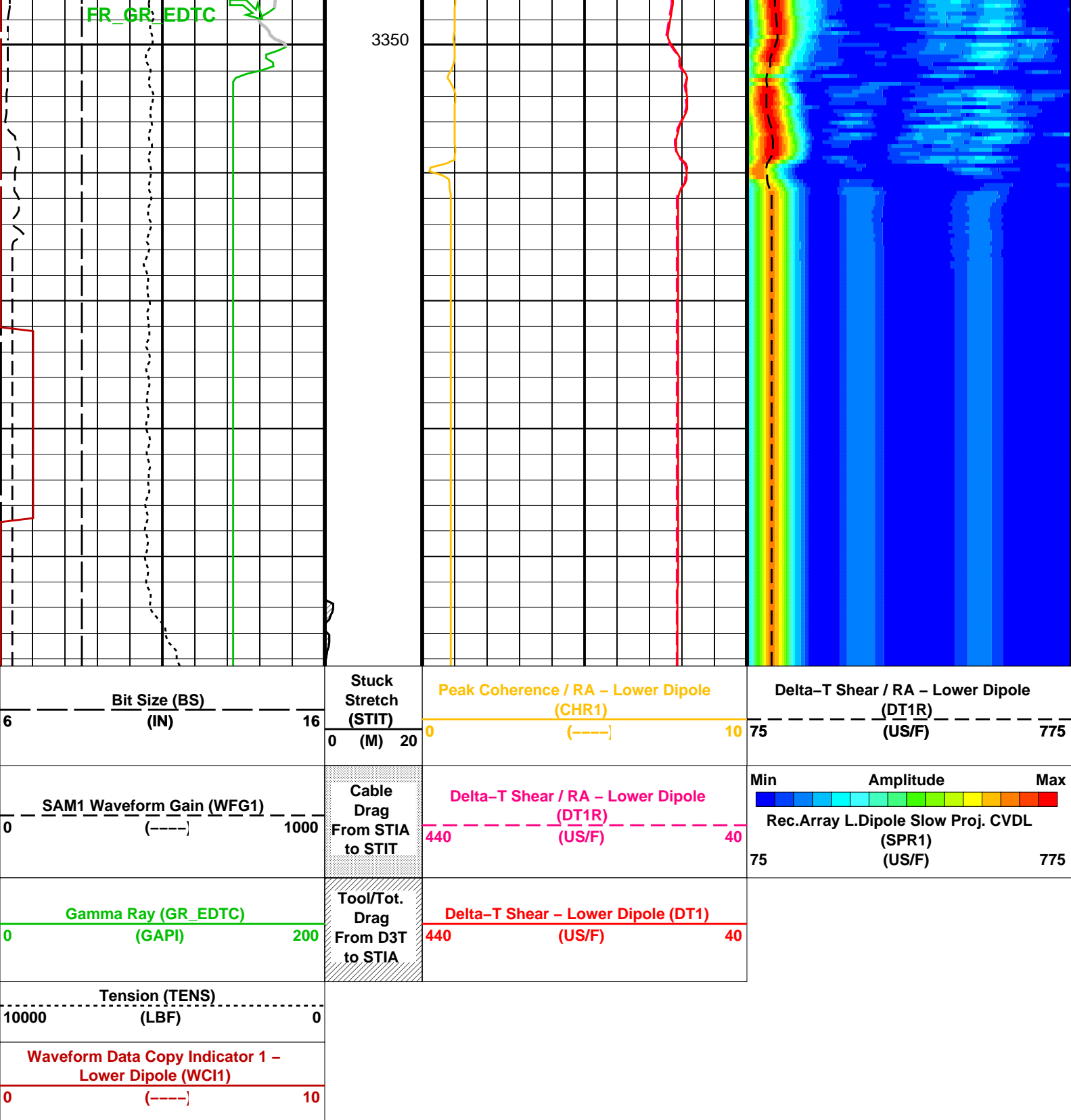




3300

3325





PIP SUMMARY

Time Mark Every 60 S

Parameters

DLIS Name	Description	Value	
DSST-B: Dipole Shear Imager – B			
DDE1	Digitizing Delay 1	0	US
DDEX	Digitizing Delay X	0	US
DLCS	Label Compressional Source – Dipole Shear	USE	
DSHL	Label Slowness Lower Limit – Dipole Shear	75	US/F
DSHU	Label Slowness Upper Limit – Dipole Shear	775	US/F
DS11	Digitizer Sample Interval 1	40	US
DSIX	Digitizer Sample Interval X	40	US
DTCS	Compressional Delta-T Source for DTCS Channel	PS_COMP	
DS12	Digitizer Sample Interval 2	512	

DWC1	Digitizer Word Count 1	512	
DWCX	Digitizer Word Count X	512	
LTXG	Lower Dipole Transmitter Geometry	156	IN
NWI1	Number Waveform Items 1	8	
NWIX	Number Waveform Items X	0	
RX1G	Receiver 1 Geometry	294	IN
RX2G	Receiver 2 Geometry	300	IN
RX3G	Receiver 3 Geometry	306	IN
RX4G	Receiver 4 Geometry	312	IN
RX5G	Receiver 5 Geometry	318	IN
RX6G	Receiver 6 Geometry	324	IN
RX7G	Receiver 7 Geometry	330	IN
RX8G	Receiver 8 Geometry	336	IN
SAM1	DSST Sonic Acquisition Mode 1 – Lower Dipole Mode	EVEN	
SAMX	DSST Sonic Acquisition Mode X – Both Dipoles or Monopole Mode for Expert	OFF	
SAS1	STC Sonic Array Status – Lower Dipole	255	
SBO1	STC Search Band Offset – Lower Dipole	3000	US
SBW1	STC Search Bandwidth – Lower Dipole	8000	US
SFC1	STC Formation Character – Lower Dipole	SELECTABLE	
SFM1	STC Filter – Lower Dipole	B1–3K	
SLL1	STC Slowness Lower Limit – Lower Dipole	75	US/F
SST1	STC Slowness Step – Lower Dipole	4	US/F
SSW1	STC Source Waveform – Lower Dipole	WF_SAM1	
SUL1	STC Slowness Upper Limit – Lower Dipole	775	US/F
SWD1	STC Slowness Width – Lower Dipole	40	US/F
TBF1	STC Time for Baseline Fill – Lower Dipole	0	US
TLL1	STC Time Lower Limit – Lower Dipole	600	US
TST1	STC Time Step – Lower Dipole	200	US
TUL1	STC Time Upper Limit – Lower Dipole	15912.5	US
TWD1	STC Time Width – Lower Dipole	2000	US
TWI1	STC Integration Time Window – Lower Dipole	1600	US
TWSX	Transmitter Waveform Select X	0	
WFM1	Waveform Mode 1	W1	
DIR: Directional Survey Computation			
SPVD	TVD of Starting Point	0	FT
TIMD	Along-hole depth of Tie-in Point	0	FT
TIVD	TVD of Tie-in Point	0	FT
STI: Stuck Tool Indicator			
LBFR	Trigger for MAXIS First Reading Label	STI	
STKT	STI Stuck Threshold	2.5	FT
TDD	Total Depth – Driller	3482.00	M
TDL	Total Depth – Logger	3482.50	M
System and Miscellaneous			
BS	Bit Size	8.500	IN
DO	Depth Offset for Playback	0.0	M
PP	Playback Processing	NORMAL	

Format: DSST\_LOWER\_DIPOLE\_VDL\_COLOR      Vertical Scale: 1:200      Graphics File Created: 09-Feb-2010 12:40

## OP System Version: 17C0-154

FBST-B	17C0-154	DSST-B	17C0-154
EDTC-B	17C0-154	DTPC-A	17C0-154

### Input DLIS Files

DEFAULT	FMI_DSI_027PUP	FN:40	PRODUCER	08-Feb-2010 22:35	3374.3 M	3269.9 M
---------	----------------	-------	----------	-------------------	----------	----------

### Output DLIS Files

DEFAULT	FMI_DSI_035PUP	FN:58	PRODUCER	09-Feb-2010 12:40
---------	----------------	-------	----------	-------------------